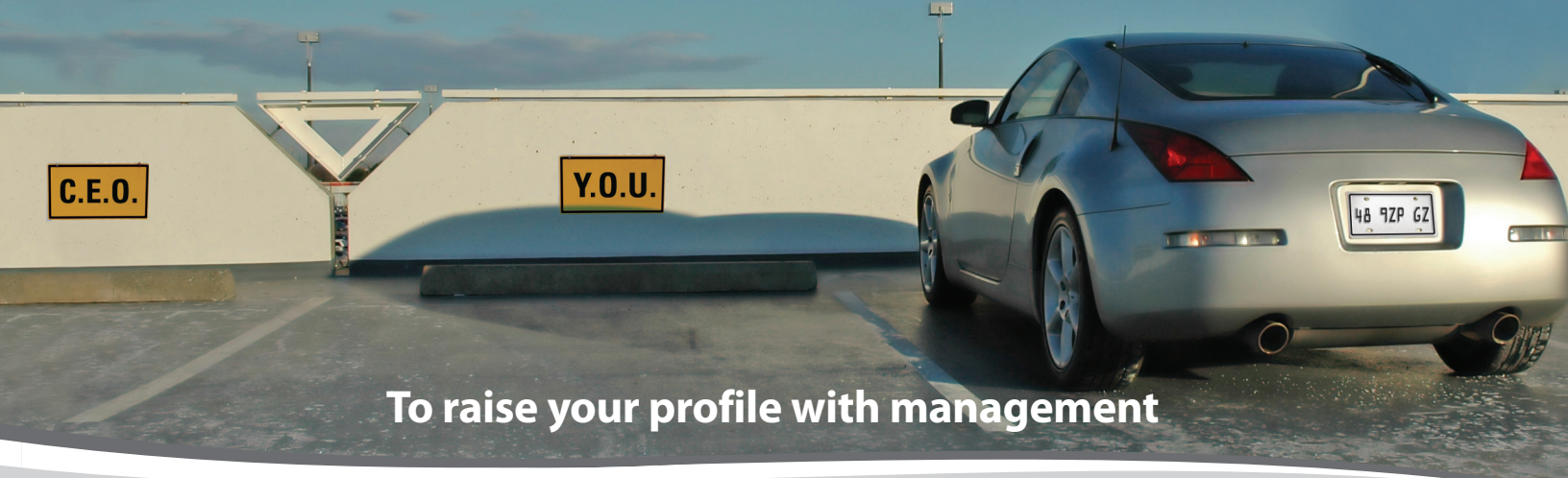


One good idea is all it takes...



To raise your profile with management

Reduce costs with GFI's popular fax server

GFI FaxMaker™ is a leading fax server that makes sending and receiving faxes an efficient, simple and cost-effective process. It solves the problems associated with manual faxing – waiting for the fax to go through, printing out the document, and walking to and from the fax machine – as GFI FaxMaker allows users to receive and send faxes directly from their email client.

With thousands of customers and numerous awards, GFI FaxMaker is a well-established network fax server, offering reliability and enterprise functionality at highly competitive pricing. The benefits are numerous: less time is spent sending, collecting and distributing faxes, noticeable cost savings and each fax received or sent is saved in digital format as an email.

Well-established
fax server

Thousands of customers

Competitive pricing

Excellent performance

BENEFITS

- » More than 10 years as a leading and highly popular network fax server
- » Excellent price-performance ratio and immediate return on investment (ROI)
- » Supports Microsoft Exchange 2000, 2003, 2007, 2010, Lotus Domino and MDAemon
- » Award-winning solution
- » Easy to use and configure
- » Install and forget: No burden on administrators
- » Client has been localized in English, German, Spanish, Italian, Czech, Polish, Bulgarian, Russian, Arabic and Turkish.



GFI FaxMaker™

Network fax server software for Exchange/SMTP/Lotus

No burden on the administrator

GFI FaxMaker is easy to install, requires little maintenance and integrates with existing messaging clients and customized solutions.

Seamless integration with existing business processes

GFI FaxMaker integrates with your mail server, allowing users to send and receive faxes and SMS/text messages using their email client. The company can also search for and back up all faxes in the same way as emails are stored and retrieved on the network.

Active Directory integration reduces administration

GFI FaxMaker for Exchange/SMTP/Lotus was designed from the ground up to minimize its administration. It integrates with Active Directory and therefore does not require the administration of a separate fax user database. User-related settings can be applied to Windows users or groups directly.

Supports Microsoft Exchange, Lotus Domino and other SMTP servers

GFI FaxMaker integrates with Exchange Server 2000/2003/2007/2010 via a standard Exchange SMTP connector. There are no schema updates to Active Directory. This makes GFI FaxMaker scalable and indifferent to new Exchange service packs and versions. GFI FaxMaker can be installed on the Exchange server or on a separate machine, in which case no software has to be installed on the Exchange server itself! GFI FaxMaker also integrates with Lotus Domino and other popular SMTP servers.

Fax over IP: XCAPI integration and support for Dialogic SDK v 6.3 – and FREE 1-year XCAPI FoIP channel

Fax over IP (FoIP) enables you to easily send faxes over the Internet, integrating with the existing IP infrastructure. GFI FaxMaker integrates with your existing IP-enabled PBX to offer FoIP without any additional hardware requirements. GFI FaxMaker's FoIP may also be used to implement least cost routing (LCR); resulting in a cost-effective reduction in international calls dialled (calls are translated into a local call at the recipient's country).

The XCAPI Fax over IP (FoIP) solution from TE-SYSTEMS is integrated within GFI FaxMaker 2011. Additionally, one channel of XCAPI FoIP will be provided for free for one year with every GFI FaxMaker license purchase; after that year, the customer can either purchase an XCAPI license or stop using it.



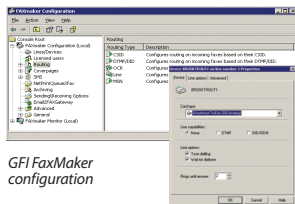
GFI FaxMaker also supports Dialogic SDK version 6.3, which has a lighter and cheaper version of the SR140 Fax over IP solution. As part of the 6.3 SDK release, customers can evaluate both SR140 and SR140-L without requiring a demo license. Customers can also choose to upgrade from the SR140-L to the SR140.

Automated fax delivery/inbound fax routing

GFI FaxMaker can automatically route incoming faxes to the user's mailbox or to a particular printer based on a DID/DDI/DTMF number or the line on which the fax was received. Faxes can also be forwarded to a public folder or assigned to a network printer per installed fax port.

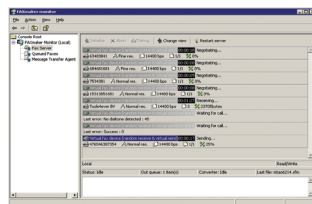
Other features:

- » SMS/texting gateway allows users to send SMS/text messages from their desktop
- » Multiply the value of GFI FaxMaker with powerful reporting through the integrated ReportPack
- » Supports multiple mail servers and clustering
- » Native ISDN support
- » Archive faxes to GFI MailArchiver, to SQL, or another archiving solution
- » OCR module supports over 115 western languages
- » Assists with HIPAA compliance
- » Support for fax class 2.1
- » Supports Outlook contacts
- » And much more!



GFI FaxMaker configuration

Supports Brooktrout and ISDN fax cards and modems



The GFI FaxMaker server monitor

System requirements

- » A Windows 2003/2008/XP server machine with at least 256 MB of RAM and 800 MHz processor
- » A professional fax device; for a complete list go to <http://kbase.gfi.com/showarticle.asp?id=KBID001220>
- » If you are installing GFI FaxMaker on a separate machine, the IIS SMTP service will need to be installed.

Download your free trial from <http://www.gfi.com/faxmaker>



GFI FaxMaker™

Network fax server software for Exchange/SMTP/Lotus

Contact us

Malta

Tel: +356 2205 2000
Fax: +356 2138 2419
sales@gfi.com

UK

Tel: +44 (0)870 770 5370
Fax: +44 (0)870 770 5377
sales@gfi.co.uk

USA

Tel: +1 (888) 243-4329
Fax: +1 (919) 379-3402
ussales@gfi.com

Asia Pacific - South Australia

Tel: +61 8 8273 3000
Fax: +61 8 8273 3099
sales@gfiap.com

For more GFI offices please visit <http://www.gfi.com/company/contact.html>

